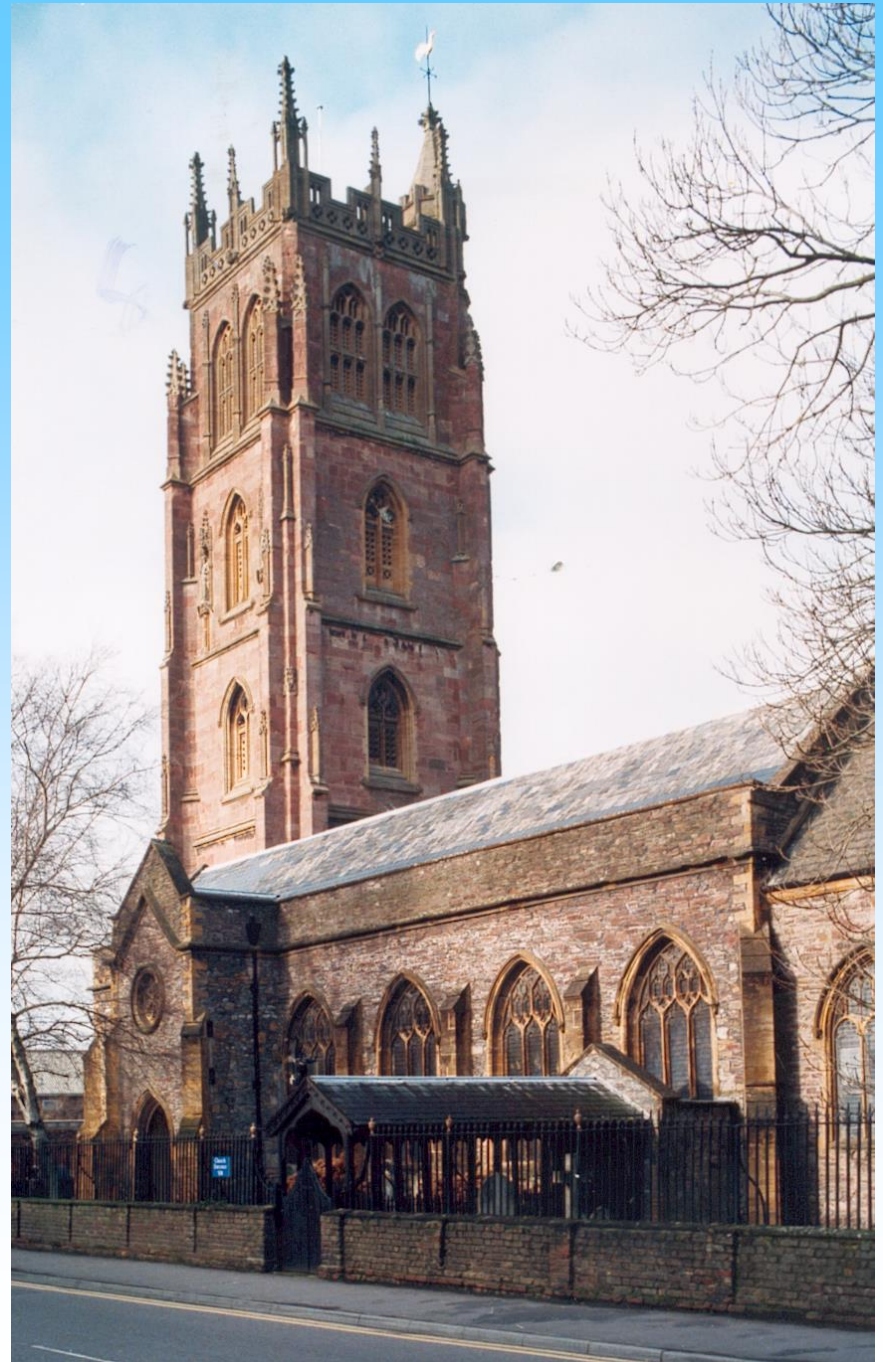


St. James

A pictorial
window onto
some of the
changes that
have happened
over the past
900 years



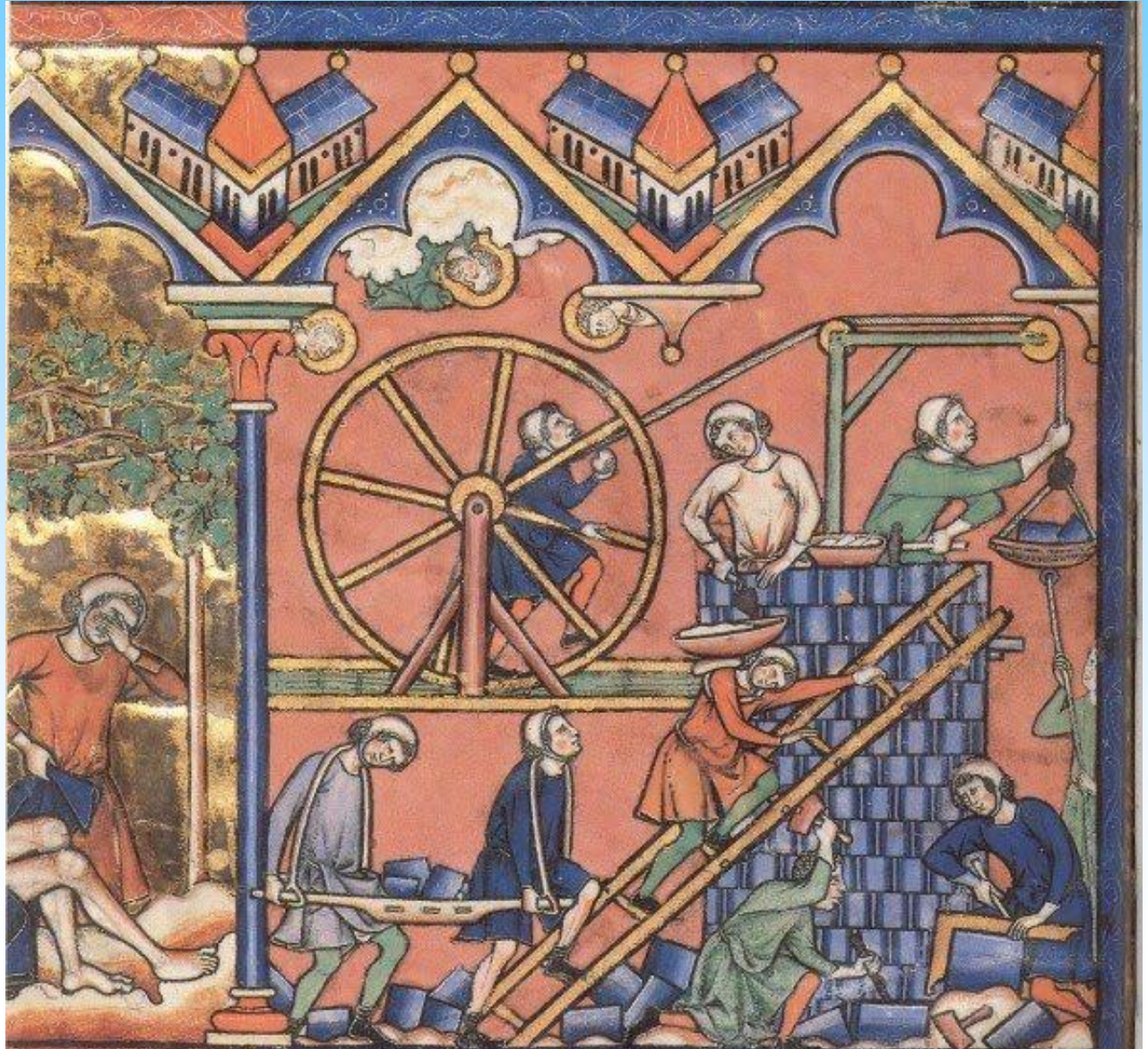
900 years old and still going strong

Archaeological excavations in 2001 when the church floor was replaced have confirmed the original ground plan of the 12th century church. Earliest written records indicate the church was already there in 1169 AD



Change change change

Records and buildings indicate how the church has changed and adapted over the centuries to meet the changing needs of our community ..



The Font



Although we don't have any pictures of the medieval structure there are some things in the church that are centuries old. The Font is one of the oldest items in the Church. Constructed in the 15th Century it depicts Jesus and the disciples. The disciples can be identified by the symbols they carry. This is a reminder that as we are baptised to be followers of Jesus Christ. Its position has been moved from its original position near the entrance in the 19th Century.

Pulpit

The Pulpit is dated 1633 and like the font has moved around. In the 19th Century it was lowered from an apparently “dizzy height” and placed on the North side. In 1981 it was moved to its current position.

During the Civil War one minister was interrupted during his sermon and ejected by Parliamentarian soldiers.



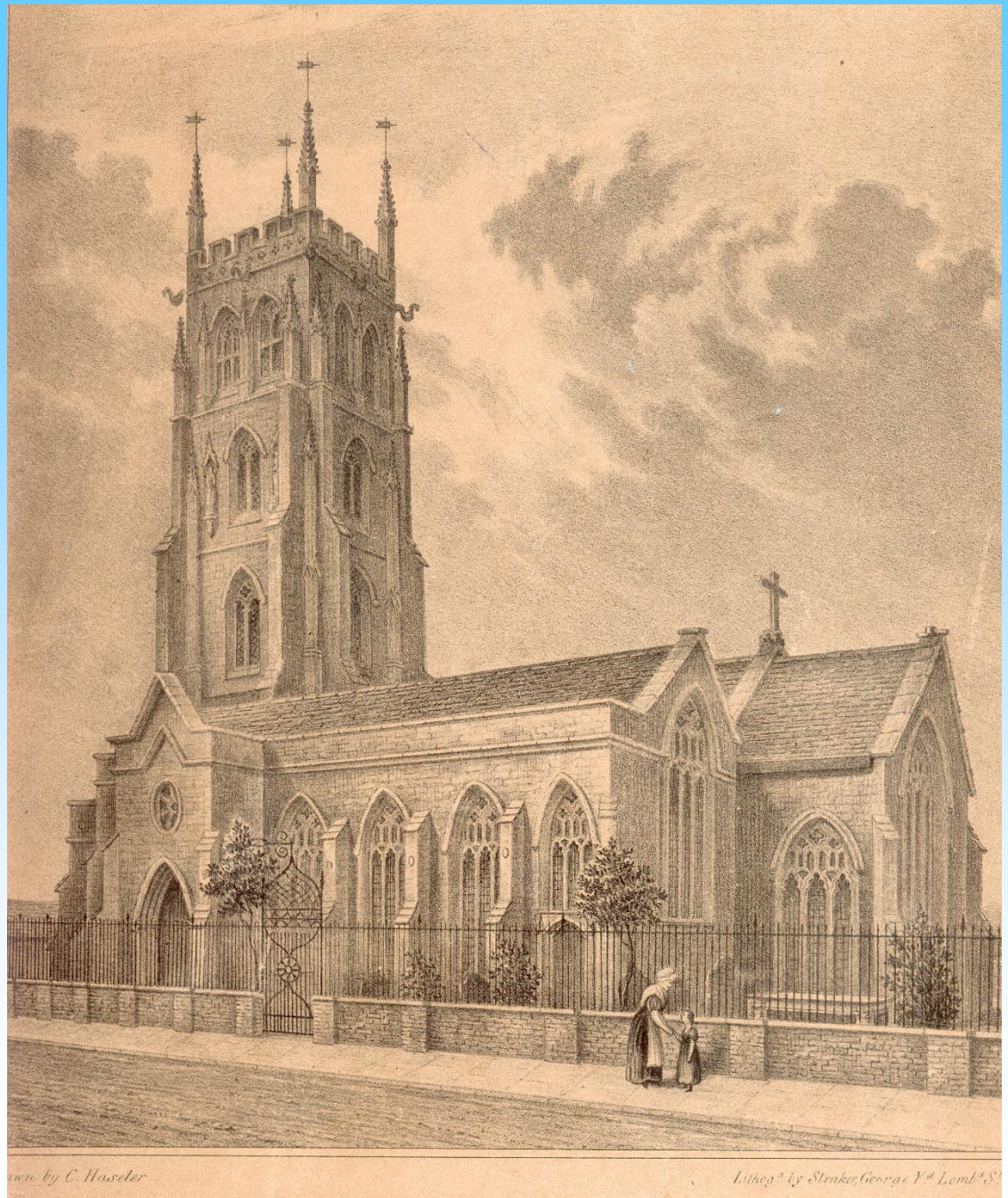
Here are a few pictures from the 19th and 20th Centuries
which show some of the changes

St. James in 1832

before the extension of the South Aisle

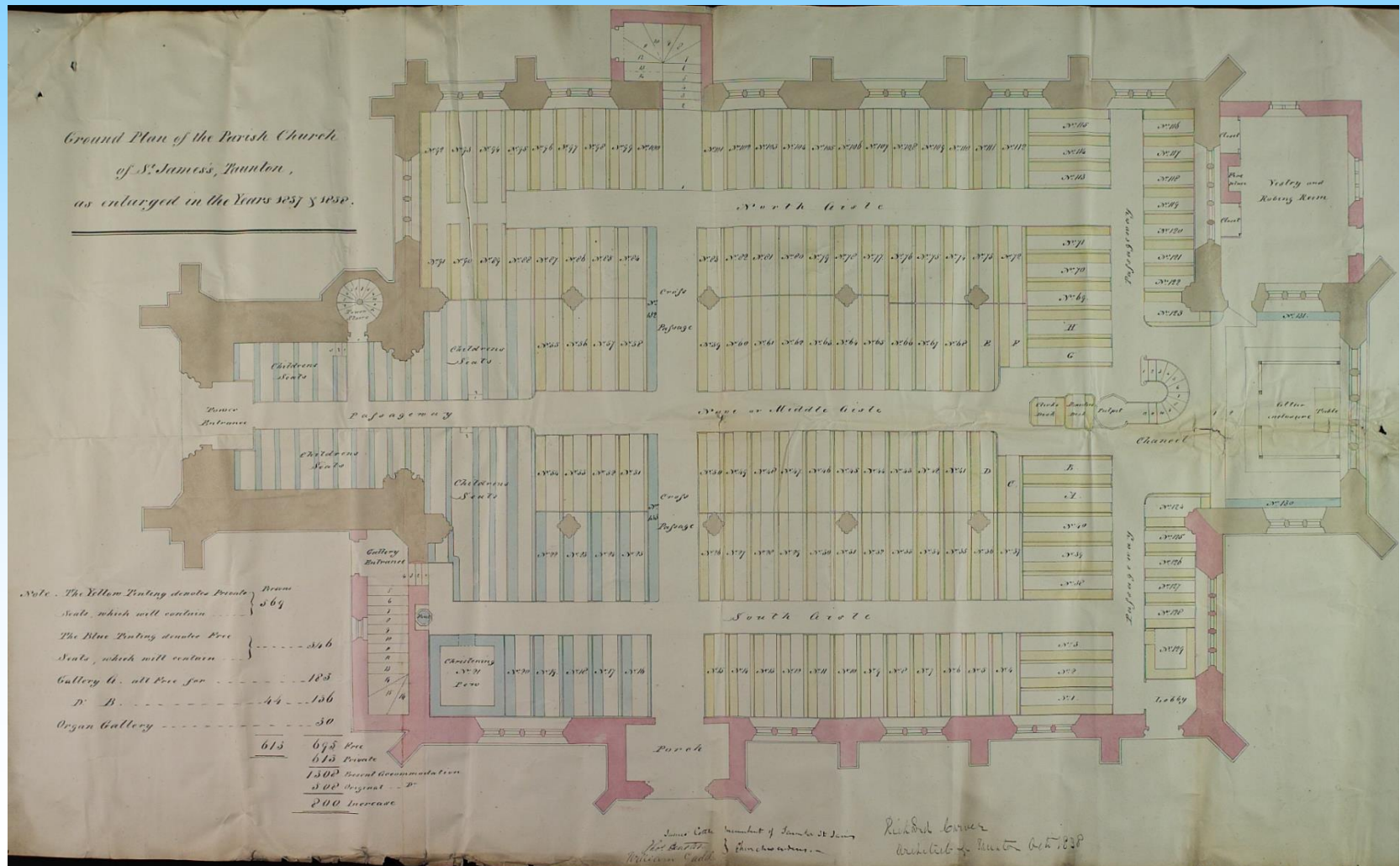


St. James in
1838
after the
enlargement of the
South Aisle but
before the extension
of the chancel



Plan of St. James 1838

Showing the increase in seating capacity to accommodate the population of the Parish – it would have been quite a squeeze but the aim was to fit in over 1000 parishioners!!
Galleries were added to provide a double decker capacity



The Old Parsonage

(The Vicar lived next door in a rambling old parsonage –
Our present Vicar, Tim, must be very glad that he has a
modern three bedroomed vicarage)



Changes to the interior of the church circa 1880s

(Note the lighting – an early example of electric church lighting)
The galleries had been removed



Pictures of internal changes



THE CHANCEL, ST. JAMES

TAUNTON

From this.....



To this.....



1980s

To this



2001



Removing the rotten floor in 2001 gave opportunity to replace pews with more comfortable seating and put in underfloor heating, which is why your toes are cosy in winter



Changes outside too

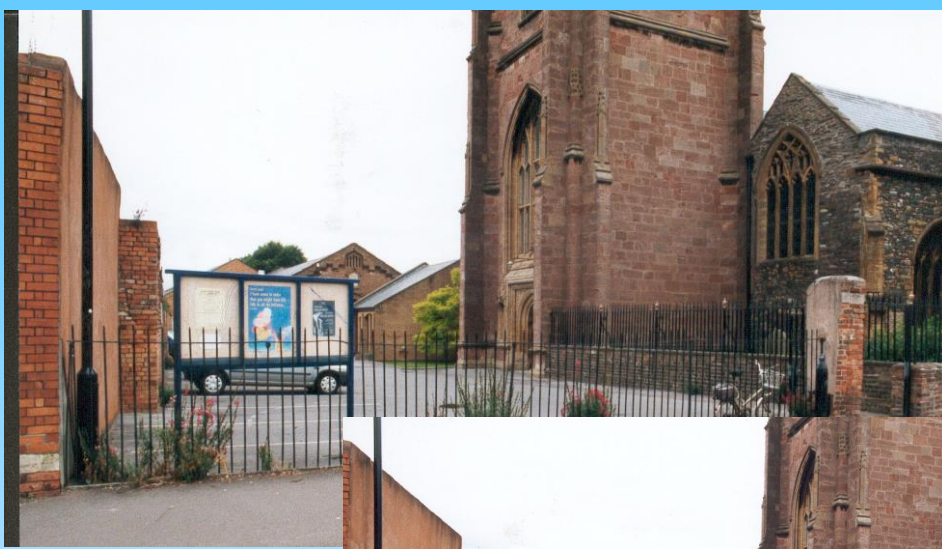
1985 The Building of the Link Corridor and Offices – Before



.....After



Taking out
the railings
to open up
the
entrance



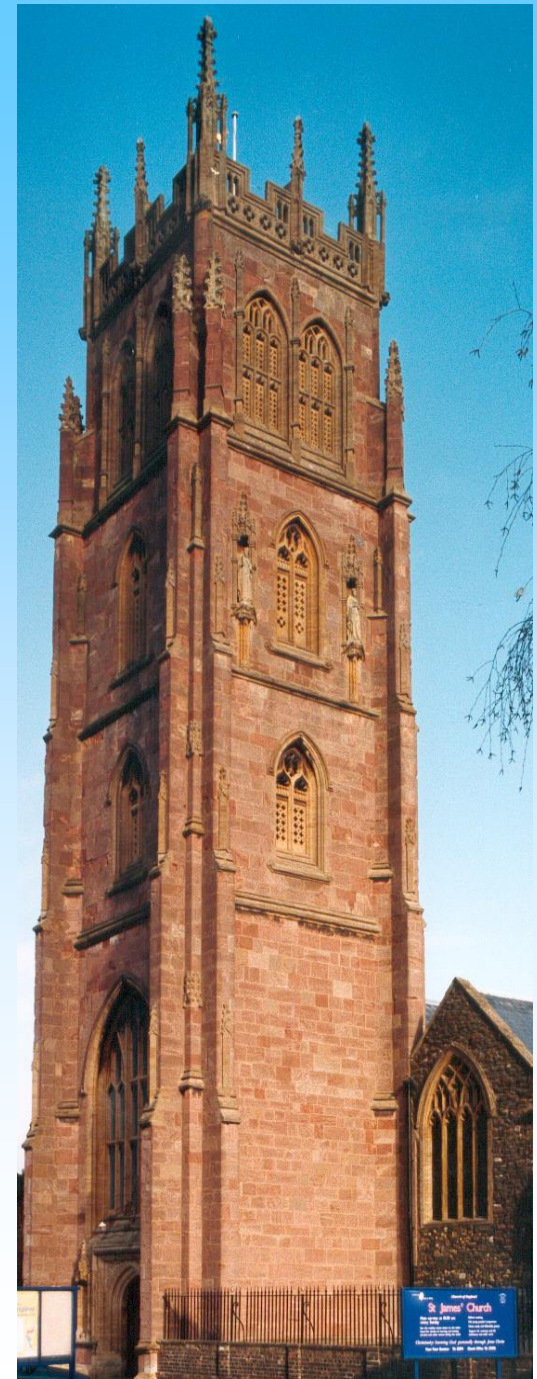
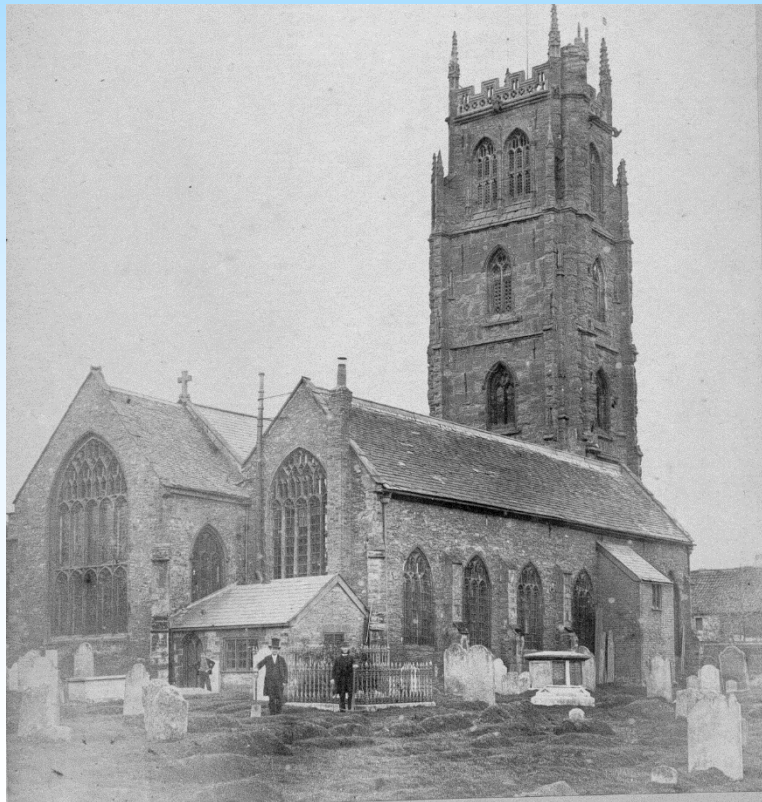
Welcome
to
St. James



The Tower

One of the newer parts of the church rebuilt circa 1875

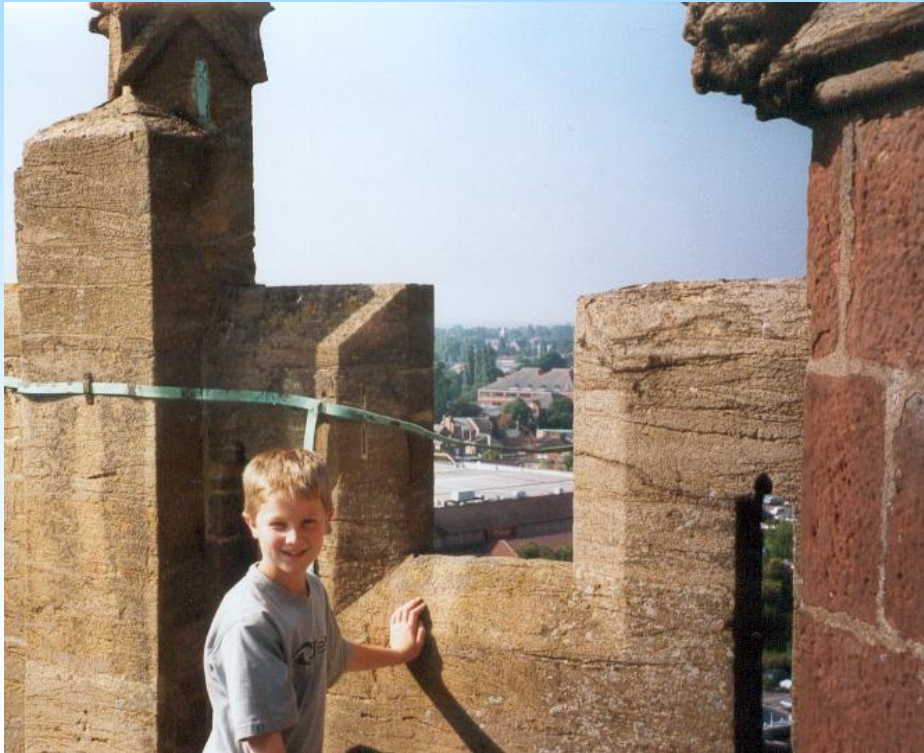
The 15th
Century Tower
pre 1875 was
in a dangerous
state of
disrepair



The tower
120 ft
High
and has
132 steps
to the top



At the top.....
.....Old Tom



A few views from the tower





That Other Tower



Looking Northish



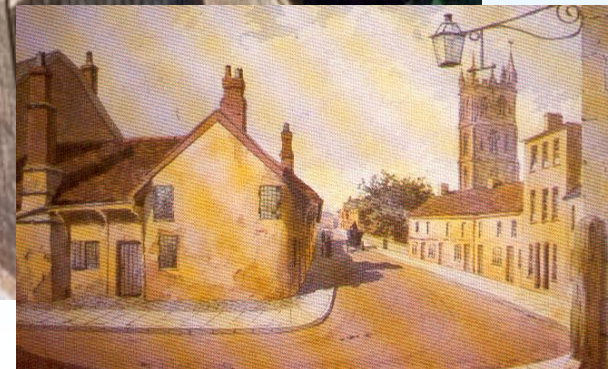
Looking Eastish



Looking Westish



Looking down onto the 'new' Almshouses which replaced those taken down in 1897



The Bells

Bell ringers have faithfully rung out the bells down the centuries. There are 8, the oldest struck in 1610



.... And here are some of the people who ring and maintain them today



Music and Singing

has played an important part in the Worship of St. James from robed choirs



1925



To Music Teams



To our present Worship team of singers and musicians





But what does not change is

The background of the slide is a deep blue with numerous light rays emanating from the top center, creating a sense of divine light or glory. The rays are lighter blue and white, fanning out across the entire background.

GOD'S STORY

The God of Salvation



We hope that you will find out more about that amazing
story of God's love at St. James